

ELOPEMENT PACKAGES 2023



## OUR HISTORY

Formally the Fortitude Valley Primitive Methodist Church, our building is heritage listed and was built from 1876 to 1900 by John Smith & Sons. Several foundation stones were laid on 1 March 1876, and the building was completed in about five and a half months.

In 1977 the congregation joined the Uniting Church and combined with the Fortitude Valley Presbyterian Church. The Brunswick Street church was required no longer, and was sold to the Queensland Potters Association in 1982.

In 2005 a major project was undertaken to construct a new gallery building on street level with the church building above it.

In early 2014, the property was purchased to its entirety and the rest is history...





BEAUTIFULLY RENOVATED IN A HERITAGE-MEETS-MODERN LUXE STYLE.

High Church offers stunning views of the Story Bridge, overlooking the night sky in the heart of the Valley - Brisbane's entertainment precinct. This venue offers a unique creative space and is the perfect backdrop for your whole wedding.

High Church allows you to conveniently have your entire wedding all in one beautiful building, over three unique areas. Starting with your ceremony in the heritage listed High Church, followed by drinks on the beautiful rooftop Terrace overlooking Fortitude Valley and the Story Bridge. Or alternatively in our downstairs space, The Gallery - boasting a modern art deco style with real Versace furniture. Instead of that awkward break while you have your wedding photos, your guests can mingle with music, beer and bubbles. Meanwhile, our amazing events team set up your reception back inside High Church.

For nearly 150 years people have celebrated life at High Church.  
Make your special day part of history.



HIGH CHURCH

## ELOPEMENT PACKAGE

\$ 3950

Designed for couples seeking an intimate and unforgettable wedding experience. Nestled away in the heart of the Valley, our exquisite wedding venue offers a picturesque backdrop for your special day.

With our elopement package, we invite you to escape the traditional wedding frenzy and immerse yourselves in an intimate celebration of love. Our experienced team will ensure every detail is flawlessly executed, allowing you to focus on each other and the heartfelt moments shared.

*Based on up to 15 guests  
Monday - Thursday only*



## *Inclusions*

Exclusive use of High Church and The Terrace (for a 3 hour time slot)	✓
Onsite wedding coordinator for the duration of your ceremony	✓
White French crossed back chairs	✓
Antique registry table	✓
Selection of arbour	✓
Classic seasonal flowers on chosen arbour & registry table	✓
Neutral carpet runner (optional)	✓
Easel for welcome sign	✓
Set up of room (chairs, carpet, table, arbour)	✓
Matched styling (tea light candles, pillar candles etc)	✓
Bridal bouquet (1)	✓
Groomsmen boutonnière (1)	✓
90 minute beer and bubbles beverage package (post ceremony)	✓
Food & beverage attendant	✓
3 cold canapes and artisan cheese board (post ceremony)	✓
3 hour photography booking	✓

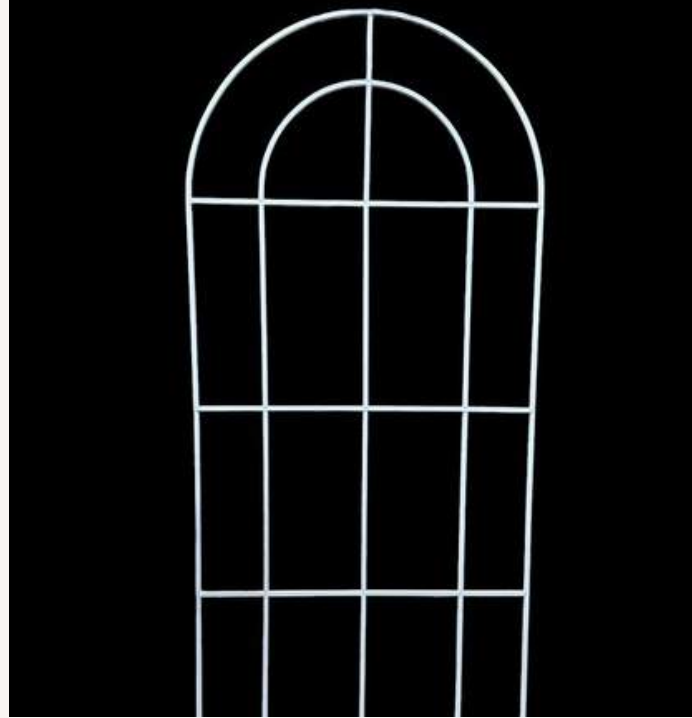


## ARBOUR SELECTION - CHOICE OF ONE



TRADITIONAL ARBOUR

- Dark stained timber arbour
- Medium size floral installation of one of the following:
  - Corner/Elbow
  - Central
  - A-Symmetrical
- Swagging/draping option
  - Ivory Chiffon
  - Dove Grey Chiffon
  - Pale Blue Chiffon



WINDOW STYLE ARCH

- White window arch, 225cm tall
- Medium size floral installation of one of the following:
  - Corner/Elbow
  - Central
  - A-Symmetrical



PLINTH & FRAME COMBO

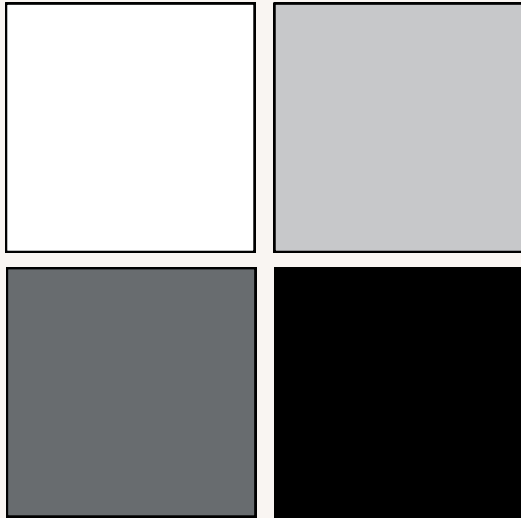
- White, black or gold frame on two (2) white acrylic plinths
- Floral installation on the top of both
- Small floral installation at base of plinths
- Medium size floral installation of one of the following:
  - Corner/Elbow
  - Central
  - A-Symmetrical

*All selections include registry table florals and matched styling*

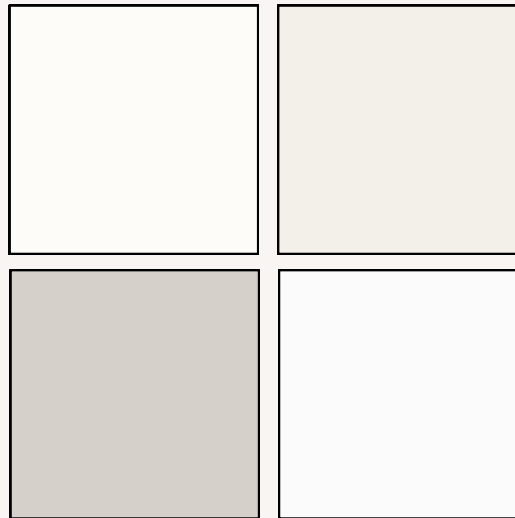


COLOUR PALLETTE SELECTION - CHOICE OF ONE

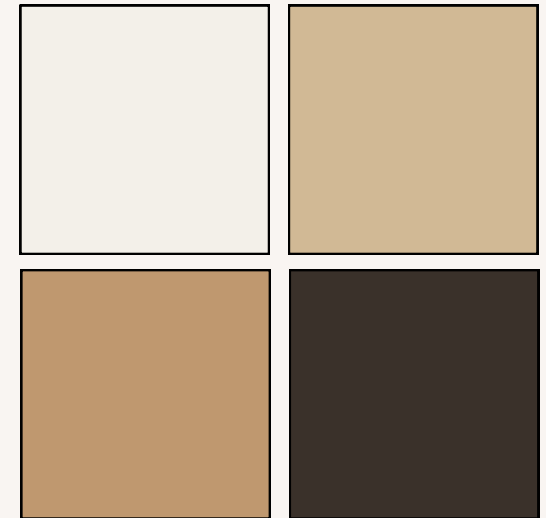
*Monochromatic*



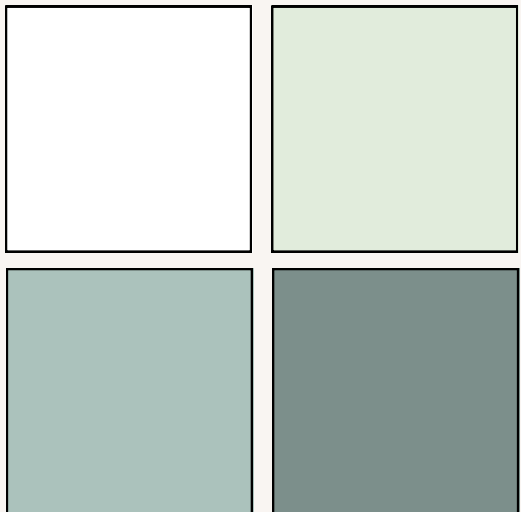
*White & Neutral*



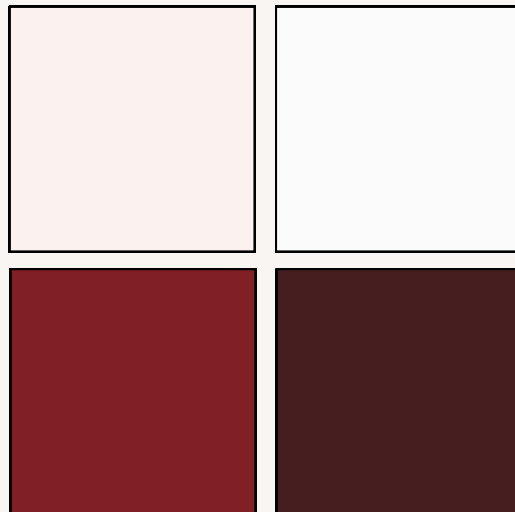
*Earth Tones*



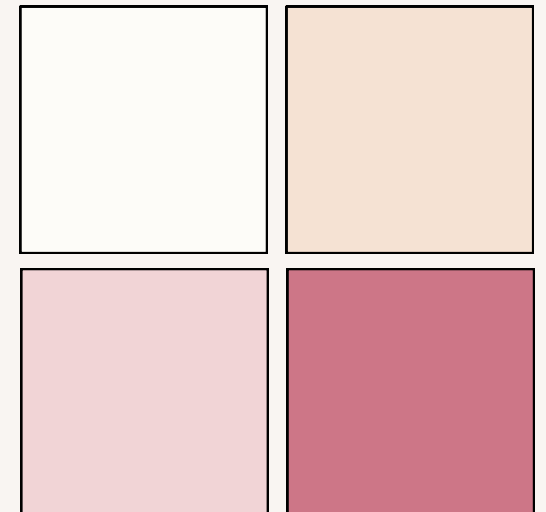
*Green & White*



*Bold & Jewel*



*Pretty in Pink*





All bookings include

*BRIDAL BOUQUET  
GROOMSMEN BOUTENNEIRE*

Seasonal florals & greenery for both subject to availability and market price.

Bouquets and boutonnieres will match the arbour to create a cohesive look and style for the day.

**BESPOKE**

If you have another look or style in mind, please chat to us about your vision.

For additional fees we can add and bespoke the floral packages to suit.



## CANAPES

*Selection of three, 3 per person*

Whipped ricotta, toasted brioche, truffle honey & jamon (NF)

Fajita Chicken, crispy taco cup, coriander, lime, smoked sour cream (GF/NF)

Smoked salmon & wasabi roulade, cucumber, cracker (NF)

Blue cheese pannacotta, pear chutney, brioche croutons (NF/V)

Prawns, coconut & ginger mayo, lettuce cup, xo crumbs (GF/DF/NF)

Pickled tomatoes, goats cheese mousse & mint tart (GF/V/NF)

Rare beef crostini, rocket pesto, balsamic, salted ricotta (NF)

Som Tum Duck Salad, mandarin (GF/DF)

Fresh Oyster, gochuchang sesame dressing, yuzu (GF/DF/NF)

## BEVERAGES

*'Beer & bubbles - 90 minute package*

Sparkling Spanish Cava

Premium Craft or Full Strength Beer

Premium Light Beer

House Made Punch (non-alcoholic)

Mineral Water



## PHOTOGRAPHY

High Church Brisbane is fortunate to work with a variety of talented photographers week in and week out. For our elopement package, we will source and seek availability of one of our favourite photographers and book them for a 3 hour timeslot.

On the day of your elopement, the photographers will seamlessly blend into the background, allowing you to focus on each other while they discreetly capture the magic unfolding around you. Their unobtrusive presence ensures that every candid smile, tear of joy, and heartfelt embrace is preserved without interrupting the natural flow of your day.





HIGH CHURCH BRISBANE | 483 BRUNSWICK ST, FORTITUDE VALLEY

07 3186 0011 | [INFO@HIGHCHURCH.COM.AU](mailto:INFO@HIGHCHURCH.COM.AU)

